

# Faculty

**Roland M Schmid, Christoph Schlag**  
Dept. of Medicine II, Klinikum Rechts der Isar, Technical Univ. of Munich, Ismaninger Str. 22, 81675 Muenchen, DE

**Frieder Berr, Andrej Wagner**, Dept. of Medicine I, Paracelsus Medical University, Strubergasse 22, 5020 Salzburg, AT

**Hans-Peter Allgaier**  
Department of Medicine, Diakoniekrankenhaus, 79110 Freiburg, DE

**Franz-Ludwig Dumoulin**  
Dept. of Medicine, Gemeinschaftskrankenhaus, 53113 Bonn, DE

**Jürgen Hochberger, Song-Sa Dammer**  
Dept. of Gastroenterology, Vivantes Klinikum im Friedrichshain Landsberger Allee 49, 10249 Berlin, DE

**Sergey V. Kantsevov**  
Institute for Digestive Health & Liver Diseases, Mercy Med. Center University of Maryland School of Medicine, Baltimore, MD, USA

**Gerhard Kleber**  
Department of Medicine I, Ostalb-Klinikum, 73428 Aalen, DE

**Thierry Ponchon**  
Hôpital Edouard Herriot, Spécialités Digestives, Pavillon H, 69437 Lyon, FR

**Tsuneo Oyama, Akiko Takahashi**  
Dept. of Endoscopy, Saku Central Hospital Advanced Care Center, Zip code 3850051, 3400-28 Nakagomi, Saku, Nagano, JP

**Takashi Toyonaga**  
Dept. of Internal Medicine, Graduate School of Medicine, Kobe University, 7-5-1 Chu-o-ku, Kusunoki-Cho, Kobe, Hyogo, 650-0017, JP

**Hans Seifert**  
Department of Internal Medicine - Gastroenterology, University Clinics Oldenburg, Rahel-Straus-Str. 10, 26133 Oldenburg, DE

**Naohisa Yahagi**  
Cancer Center, Keio University School of Medicine, 35 Shinanomachi, Shinjuku-ku, Tokyo, 160-8582, JP

**Alexander Ziachehabi**  
Department of Internal Medicine IV, Elisabethinen Hospital, Linz, AT

# Sponsors

(list of 2018, sponsoring not yet confirmed)



**Leonie Wild Charitable Foundation**

Endorsed by  **Endo-Skills Update Munich 2019**  
Early Gastrointestinal Cancer

June 28, 2019  
8:00 - 16:15

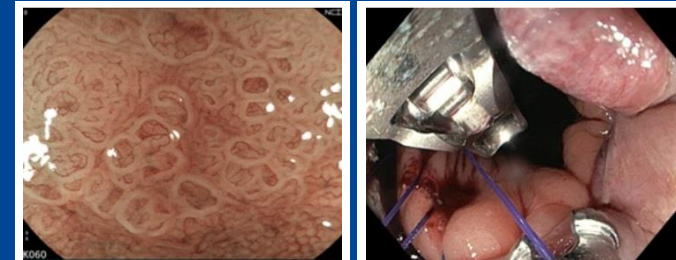
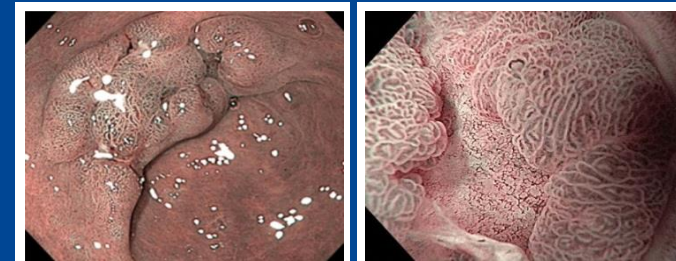
credits  
8 DFP

Dept. of Medicine II, Klinikum rechts der Isar  
Technical University of Munich

Directors  
Roland M. Schmid / DE  
Thierry Ponchon / FR  
Frieder Berr / AT

Organizers  
Christoph Schlag / DE  
Andrej Wagner / AT

Registration [endo19@mri.tum.de](mailto:endo19@mri.tum.de)  
[www.early-cancer.eu](http://www.early-cancer.eu)



Dear Colleagues,

we invite you to improve your skills in endoscopic analysis, therapeutic decision making and endoscopic resection of early neoplasias of the gastrointestinal tract:

- Accurate endoscopic assessment of surface and microvascular structure for prediction of pT category
- Indications for endoscopic versus minimal invasive surgical resection techniques
- Techniques for endoscopic en-bloc resection and suturing

This meeting focuses on all aspects to optimize endoscopic analysis and staging of neoplasias as well as strategies and performance of minimally invasive resections – to enhance proficiency in this new field.

We hope to stimulate your interest and welcome you to the Endo-Skill Update 2019 .



Th Ponchon  
president of ESGE

R M Schmid  
Klinikum rechts der Isar,  
Technical Univ of Munich

F Berr  
PMU Salzburg

The Update takes place under the patronage of

Endorsed by



Klinikum rechts der Isar  
Technische Universität München



## LIVE demonstrations, 4 cases:

### Endoscopic staging & indication (15 min LIVE each)

### En-bloc resection +/- suturing (60 min LIVE each)

#### Toyonaga T

lesion e.g. GE-junction, AdenoCa  
comments: Hochberger J, Allgaier HP

#### Yahagi N

LST colon or duodenum  
Wagner A, Kleber G

#### Kantsevov SV, Seifert H

lesion e.g. LST anorectal, ESD & suturing  
comments: Schlag Ch, Dumoulin FL

#### Oyama T, Takahashi A

gastric or esophageal NPL  
Ziachehabi A

## PRESENTATIONS (4 topics, 20 min each)

8:00 Welcome

### Session I - 8:15 - 10:30

#### Endoscopic Analysis & Indication - upper GI tract

Chairs: Schmid RM, Oyama T, Seifert H

Ziachehabi A: **Invasive early cancer in the gastrointestinal tract**

Oyama T: **How to stage early cancer in the upper GI tract (Quiz)**

### 10:30 - 11:00 Coffee break and Industry Exhibition

### Session II - 11:00 - 12:30

#### Outcome of ESD of GI Neoplasias

Chairs: Hochberger J, Kantsevov SV, Dumoulin FL

Ponchon Th: **Results of ESD & benchmarks in Japan and Europe**

### 12:30 - 13:30 Lunch and Industry Exhibition

### Session III - 13:30 - 16:15

#### Endoscopic Analysis & Indication - lower GI tract

Chairs: Ponchon Th, Yahagi N, Toyonaga T

Yahagi N: **How to stage early neoplasias in colorectum and duodenum (Quiz)**

**Conclusions and Farewell**, Yahagi N, Schmid RM

## Registration

Participation fee: 100 € (ESGE members: 80 €)

Registration under [endo19@mri.tum.de](mailto:endo19@mri.tum.de)

## Credits

8 DFP points (ID pending)

(Diplom-Fortbildung, URL)

## Contact Information

PD Dr Christoph Schlag

email: [endo19@mri.tum.de](mailto:endo19@mri.tum.de)

URL [www.early-cancer.eu](http://www.early-cancer.eu)

# Venue

Technical University of Munich, TranslaTUM

Einstein Str 25, 81675 Muenchen, Germany

